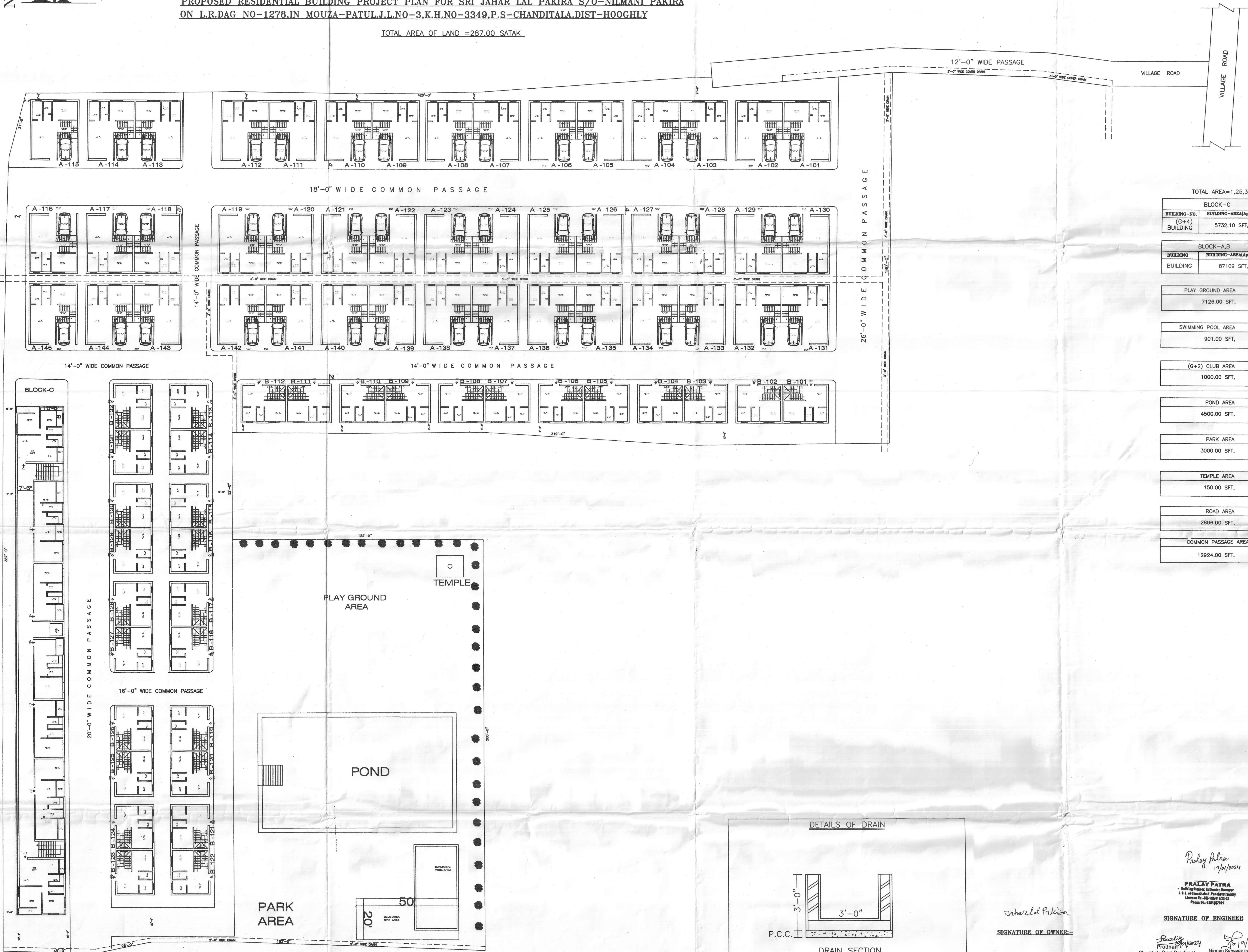




PROPOSED RESIDENTIAL BUILDING PROJECT PLAN FOR SRI JAHAR LAL PAKIRA S/O-NILMANI PAKIRA
ON L.R.DAG NO-1278,IN MOUZA-PATUL,J.L.NO-3,K.H.NO-3349,P.S-CHANDITALA,DIST-HOOGHLY

TOTAL AREA OF LAND =287.00 SATAK.



TOTAL AREA=1,25,338

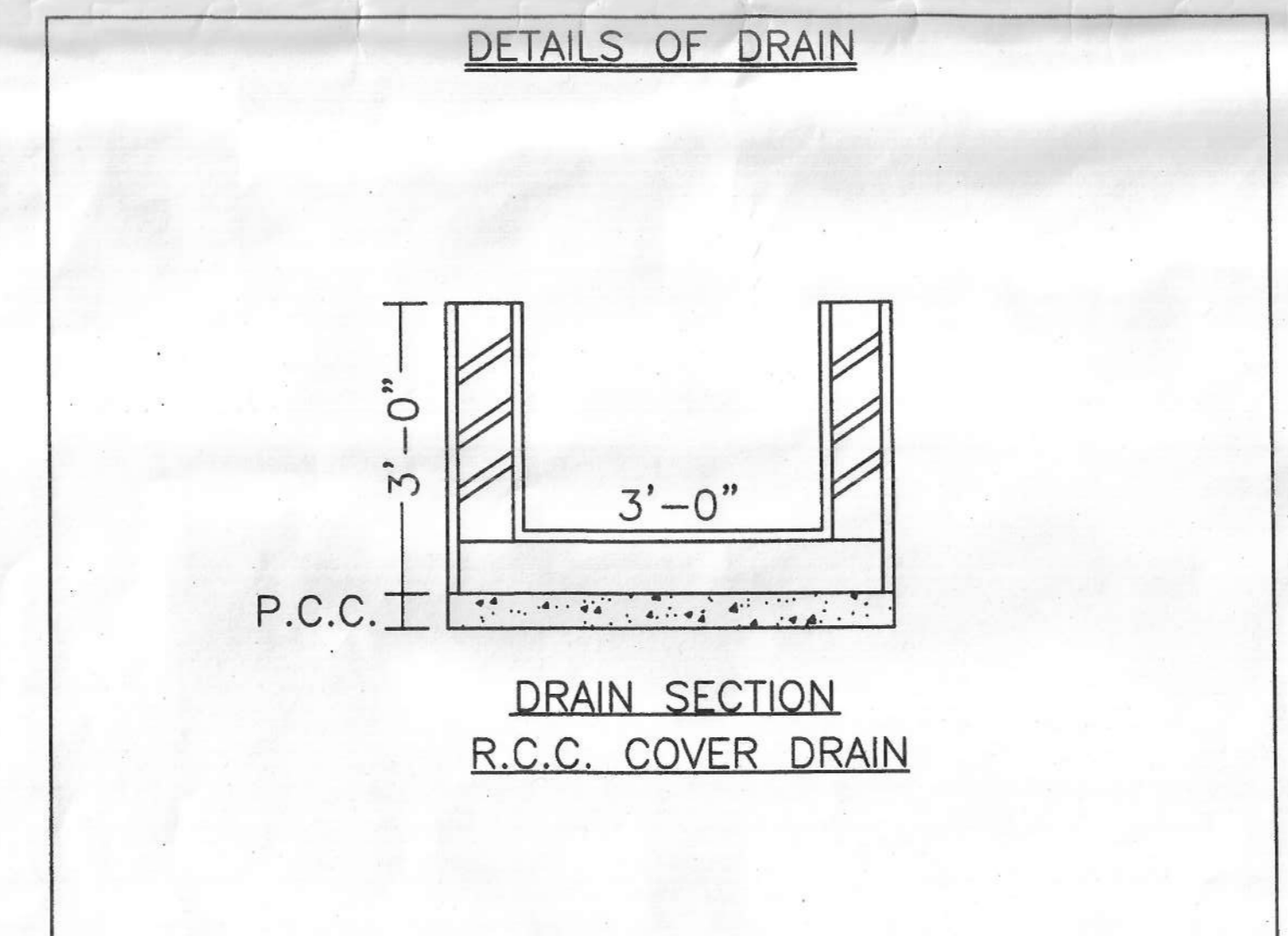
BLOCK-C	
BUILDING-NO. (G+4) BUILDING	BUILDING-AREA(Appx) 5732.10 SFT.

BLOCK-A,B	
BUILDING BUILDING-AREA(Appx)	87109 SFT.

PLAY GROUND AREA	7126.00 SFT.
SWIMMING POOL AREA	901.00 SFT.
(G+2) CLUB AREA	1000.00 SFT.
POND AREA	4500.00 SFT.
PARK AREA	3000.00 SFT.
TEMPLE AREA	150.00 SFT.
ROAD AREA	2896.00 SFT.
COMMON PASSAGE AREA	12924.00 SFT.

BLOCK-A	
BUILDING-NO.	BUILDING-AREA(Appx)
A -101	1353.87 SFT.
A -102	1353.87 SFT.
A -103	1353.87 SFT.
A -104	1353.87 SFT.
A -105	1353.87 SFT.
A -106	1353.87 SFT.
A -107	1353.87 SFT.
A -108	1353.87 SFT.
A -109	1353.87 SFT.
A -110	1353.87 SFT.
A -111	1353.87 SFT.
A -112	1353.87 SFT.
A -113	1353.87 SFT.
A -114	1353.87 SFT.
A -115	689.25 SFT.
A -116	689.25 SFT.
A -117	1353.87 SFT.
A -118	1353.87 SFT.
A -119	1353.87 SFT.
A -120	1353.87 SFT.
A -121	1353.87 SFT.
A -122	1353.87 SFT.
A -123	1353.87 SFT.
A -124	1353.87 SFT.
A -125	1353.87 SFT.
A -126	1353.87 SFT.
A -127	1353.87 SFT.
A -128	1353.87 SFT.
A -129	1353.87 SFT.
A -130	1353.87 SFT.
A -131	1353.87 SFT.
A -132	1353.87 SFT.
A -133	1353.87 SFT.
A -134	1353.87 SFT.
A -135	1353.87 SFT.
A -136	1353.87 SFT.
A -137	1353.87 SFT.
A -138	1353.87 SFT.
A -139	1353.87 SFT.
A -140	1353.87 SFT.
A -141	1353.87 SFT.
A -142	1353.87 SFT.
A -143	1353.87 SFT.
A -144	689.25 SFT.
A -145	689.25 SFT.

BLOCK-B	
B -101	850.95 SFT.
B -102	850.95 SFT.
B -103	850.95 SFT.
B -104	850.95 SFT.
B -105	850.95 SFT.
B -106	850.95 SFT.
B -107	850.95 SFT.
B -108	850.95 SFT.
B -109	850.95 SFT.
B -110	850.95 SFT.
B -111	850.95 SFT.
B -112	850.95 SFT.
B -113	835.06 SFT.
B -114	835.06 SFT.
B -115	835.06 SFT.
B -116	835.06 SFT.
B -117	835.06 SFT.
B -118	835.06 SFT.
B -119	835.06 SFT.
B -120	835.06 SFT.
B -121	835.06 SFT.
B -122	835.06 SFT.
B -123	835.06 SFT.
B -124	835.06 SFT.
B -125	835.06 SFT.
B -126	835.06 SFT.
B -127	835.06 SFT.
B -128	835.06 SFT.
B -129	835.06 SFT.
B -130	835.06 SFT.
B -131	835.06 SFT.
B -132	835.06 SFT.



Jahar Lal Pakira
SIGNATURE OF OWNER:-

Pralay Patra
19/10/2024
PRALAY PATRA
Building Planner, Shekhala, Hooghly
L.L.E. of Shekhala, Panchayat Shekhala
License No.-52-193/103-24
Phone No.-7898299

Shekhala Gram Panchayat
Shekhala, Hooghly
Nirman Sahayak in Charge
Shekhala Gram Panchayat
Hooghly
PULAKESH POLLEY
Civil Engineer (Govt. Regd.)
Kolkata Municipal Corporation
(L.S.-II)
Building Planner & Estimator